



ARC-8050T3 Rackmount

Thunderbolt™ 3 to 12Gb/s SAS RAID Storage

Quick Installation Guide

ARC-8050T3-12R/16R/24R RAID storage kit

Item list:

- ※ SAS RAID storage
- ※ Rack mounting kit
- ※ Power cords
- ※ Quick installation guide

Rack mounting kit

Item list:

- ※ One pair of mounting-bracket rail
- ※ One pair of length rail
- ※ 10-32 x 0.5-inch flange-head Phillips screws (8)



ARC-8050T3-12R



ARC-8050T3-16R

ARC-8050T3-24R

Thank you for purchasing ARC-8050T3 rackmount as your data storage. This quick installation guide gives simple step-by-step instructions for installing and configuring the RAID storage.

To install the ARECA® storage, follow these steps:

STEP 1: Install RAID Rack

To install the ARC-8050T3 rackmount into a rack with the supplied mounting rails:

1. Using supplied screws to secure the mounting-bracket rail and length rail and then secure them on the vertical rails, as shown below.

Make sure that all connections are tightened before continuing.

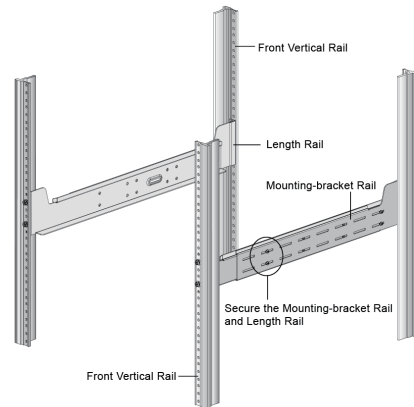


Figure 1, Attaching the Mounting Rails to the Cabinet

2. Slide the rear side of RAID storage fully onto the rack until the RAID sub-system front panel touched the front vertical rails. Align the mounting holes of the RAID storage on the front vertical rail holes.

3. Secure the RAID storage to the front vertical rail and mounting bracket rail on both sides.

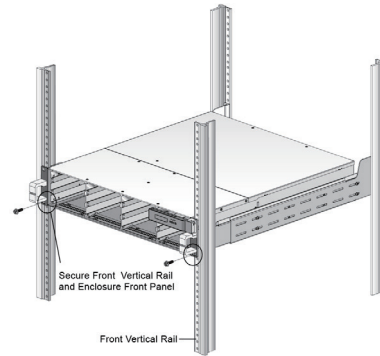


Figure 2, Attaching the Front of the RAID storage

STEP 2: Install HDD

Your RAID storage supports up to 24 x 3.5-inch disk drives or 24x 2.5-inch SAS or SATA 6.0Gb/s drives, each one contained in its individual hole on the drive tray.

1. Turn the drive tray upside down and using a screwdriver to secure the drive to the drive tray by four of the mounting screws.

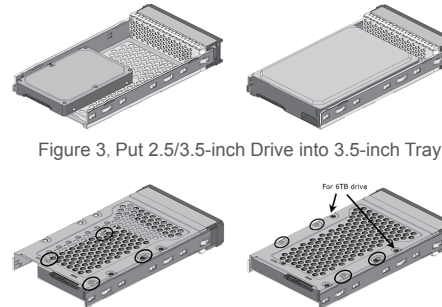
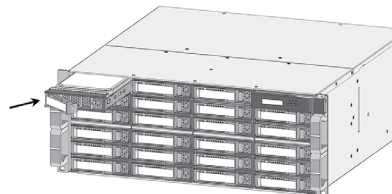


Figure 3, Put 2.5/3.5-inch Drive into 3.5-inch Tray

Figure 4, Secure the 2.5/3.5-inch Drive to the Tray

2. Slide the drive tray with the attached drive into the storage drive slot.

Each drive is hot-pluggable, allowing you to remove and insert drives without shutting down your RAID storage.



STEP 3: Host Connection

Thunderbolt connectors are provided on the back of the ARC-8050T3 rackmount for connecting the array to Thunderbolt host and next Thunderbolt devices. There are two Thunderbolt connectors on the rear of ARC-8050T3 rackmount. You can plug-in two host ports.

1. Direct connection to a Thunderbolt technology capable computer.

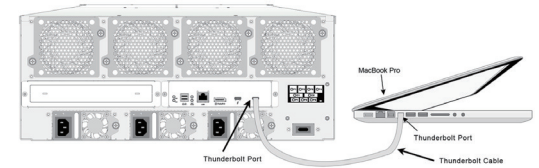


Figure 5, Connecting to Thunderbolt computer

2. Daisy chaining Thunderbolt capable devices and displays.

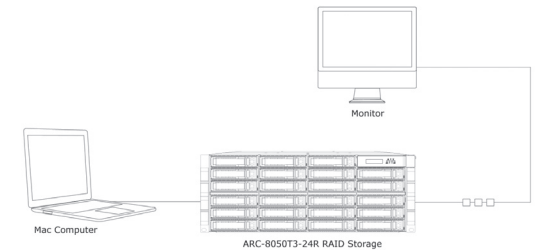


Figure 6, Thunderbolt Computer Daisy Chain

STEP 4: Expansion Connection (Optional)

ARC-8050T3 rackmount is a device that contains one expansion port. Expansion port supports being attached to JBOD. The maximum drive no. is 512 through this RAID head with JBOD enclosures. Enclosures installed with SAS disks or SATA disks can be included in the same daisy-chain. The following figure shows how to connect the SFF-8644 cable from the SAS RAID head to the JBOD.

8050T3-24R RAID Storage

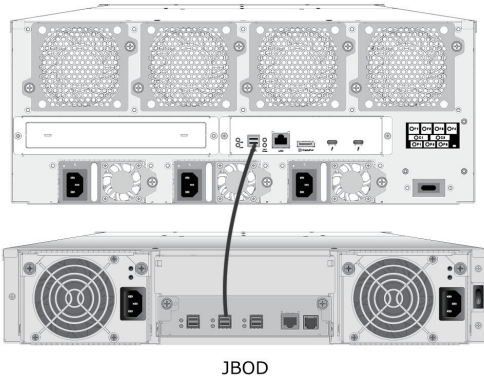


Figure 7, Single Module Daisy-chain

STEP 5: Connect LAN Port (Optional)

ARC-8050T3 rackmount has embedded the TCP/IP & web browser-based RAID manager in the firmware. User can remote manage the RAID storage via standard web browsers directly connected to the Gigabit Ethernet RJ45 LAN port. Connect Ethernet port (LAN Port) of the SAS RAID head using the included LAN cable and then to a LAN port or LAN switch.

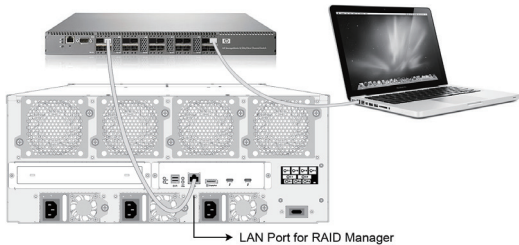


Figure 8, Lan Management Connection

STEP 6: Install Power Cable

ARC-8050T3 rackmount are equipped with two or three power supplies for each unit. Using the included power cords, connect each power supply to a suitable AC power source.

ARC-8050T3 rackmount will automatically turn on when host computer power on status is received from the thunderbolt cable. It takes about 30 seconds to fully start up the RAID storage.

STEP 7: Install Software Package

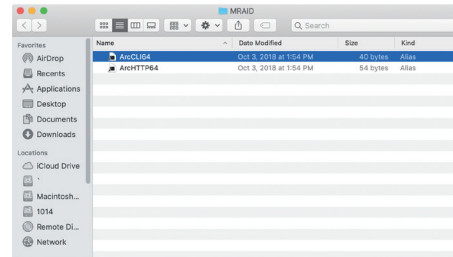
1. Download the install_mraid installer from the website at "<https://www.areca.com.tw/support/downloads.html>".
2. Unzip the install_mraid zipped file. (**PC**)
3. Double-click the install_mraid from the downloads folder (**Mac**) or the "setup.exe" unzip file (**PC**) for installing MRAID.
4. Follow the installer on-screen steps to complete the installation.

STEP 8: Configure Volume

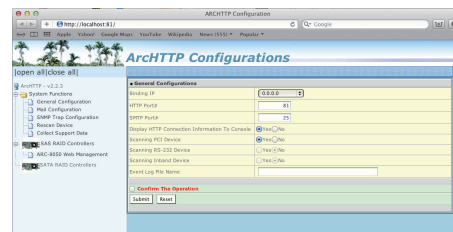
Your ARC-8050T3 rackmount can be configured by McRAID Storage Manager from ArcHTTP (Thunderbolt port), McRAID Storage Manager Through LAN port or LCD Panel with Keypad.

❖ Method 1: McRAID Storage Manager From ArcHTTP

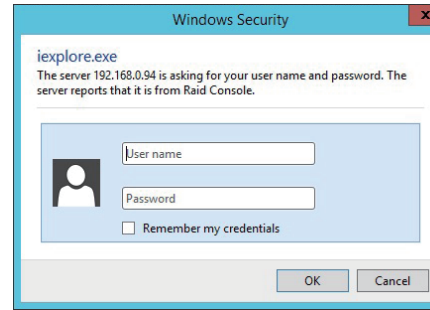
1. There is one "MRAID" icon showing on your desktop. Double-click on the "MRAID" icon to locate your ArcHTTP utility and CLI program file folder.



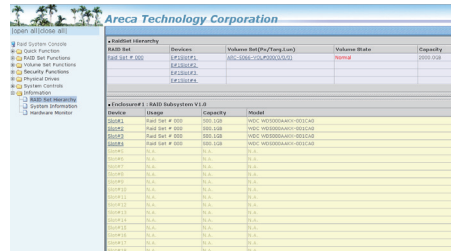
2. When you double-click on the "ArcHTTP 64", it shows all RAID storages available on the system and create an individual RAID storage icon located on left column of the "ArcHTTP Configurations" screen.



3. Locate "ARC-8050T3 Web Management" and launch the selected McRAID storage manager.



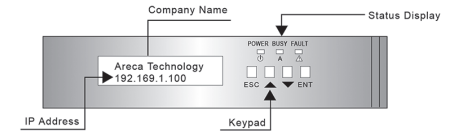
Enter RAID storage default User Name "admin" and the Password "0000" when the login page prompted for it. After logging in, the McRAID storage manager process starts.



Click on the "Quick Create" in the main menu, your volume is automatically configured based on the number of disks in your system. You can create a RAID set associated with exactly one volume set. The user can change the Raid Level, Capacity, Initialization Mode, and Stripe Size. A hot spare option is also created, depending on the exist configuration. Tick on the "Confirm The Operation" check box and click on the "Submit" button, the RAID set and volume set will start to initialize. If you prefer to customize your volume set, please use the "Raid Set Functions" and "Volume Set Functions". See chapter 4 of ARC-8050T3 user manual for information on customizing your RAID volumes using McRAID storage manager. Otherwise, to begin using the ARC-8050T3 right away.

❖ Method 2: LCD Panel with Keypad (Optional)

You can use LCD front panel and keypad function to simply create the RAID volume. The LCD status panel also informs you of the disk array's current operating status at a glance. The LCD provides a system of screens with areas for information, status indication, or menus. The manufacture default password is set to 0000. The initial screen is as following:



For additional information on using the LCD to configure the RAID subsystem see the LCD manual. You can download it from the website below:

http://www.areca.us/support/download/RaidCards/Documents/Manual_Spec/LCD_manual.zip

❖ Method 3: McRAID Storage Manager From LAN Port (Optional)

User can remote manage the ARC-8050T3 rack-mount without adding any user specific software (platform independent) via standard web browsers directly connected to the Gigabit Ethernet RJ45 LAN port. The IP address default shows in the LCD screen. Launch the Web Browser-based RAID manager by entering [http://\[IP Address\]](http://[IP Address]) in the web browser.

Type the User Name and Password. The RAID controller default User Name is "admin" and the Password is "0000". After entering the user name and password, click the button to access the McRAID storage manager.

See the chapter 4 of Web Browser-based Configuration on the user manual detailing the McRAID Storage Manager to customize your RAID configuration.

If you need more detail information, please download ARC-8050T3 rackmount user manual from the website below:

<https://www.areca.com.tw/support/downloads.html>